

WHAT Annual General Meeting 20 March 2025

Abbas Raza

Local Communities and Partnerships



WHAT Annual General Meeting

Items:

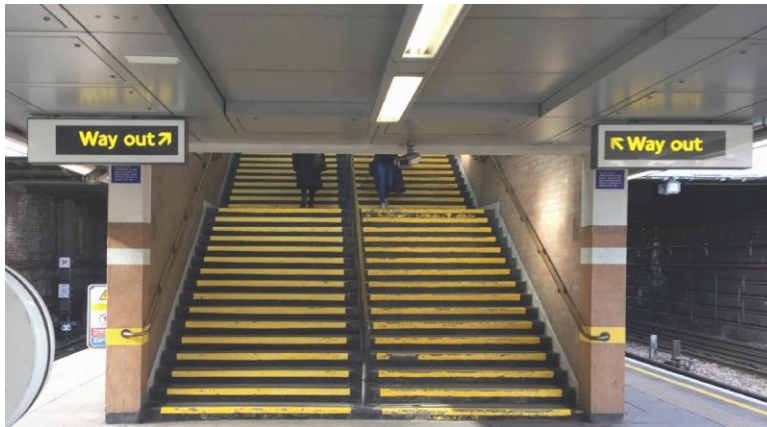
- West Hampstead Tube station step free access work
- Local Implementation Plan funding 25/26
- HS2
- Questions and cases



West Hampstead station - Camden Objectives



- Step-free access from street to platform
- Increased gate line and ticket hall capacity
- Entrance to remain prominent on West End Lane
- Provision of new public space / square in front of the station entrance
- Provision of cycle parking near station entrance
- Public toilets(s)
- Complement other s106 funded public realm improvements on West End Lane



TfL Context and Third-Party Funding

- Progress depends on deliverability and TfL's future funding position
- Schemes are prioritised where there is third party funding available

- More than a third of Underground stations across London provide step-free access
- The Mayor of London has set TfL the ambitious goal of making 50 per cent of Tube stations step-free by 2030

O2 Masterplan



Visit website:
o2centremasterplan.co.uk
Sign up for updates on Commonplace:
o2centremasterplan.commonplace.is



Existing Station

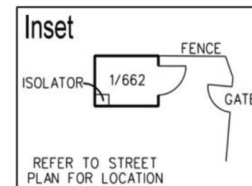
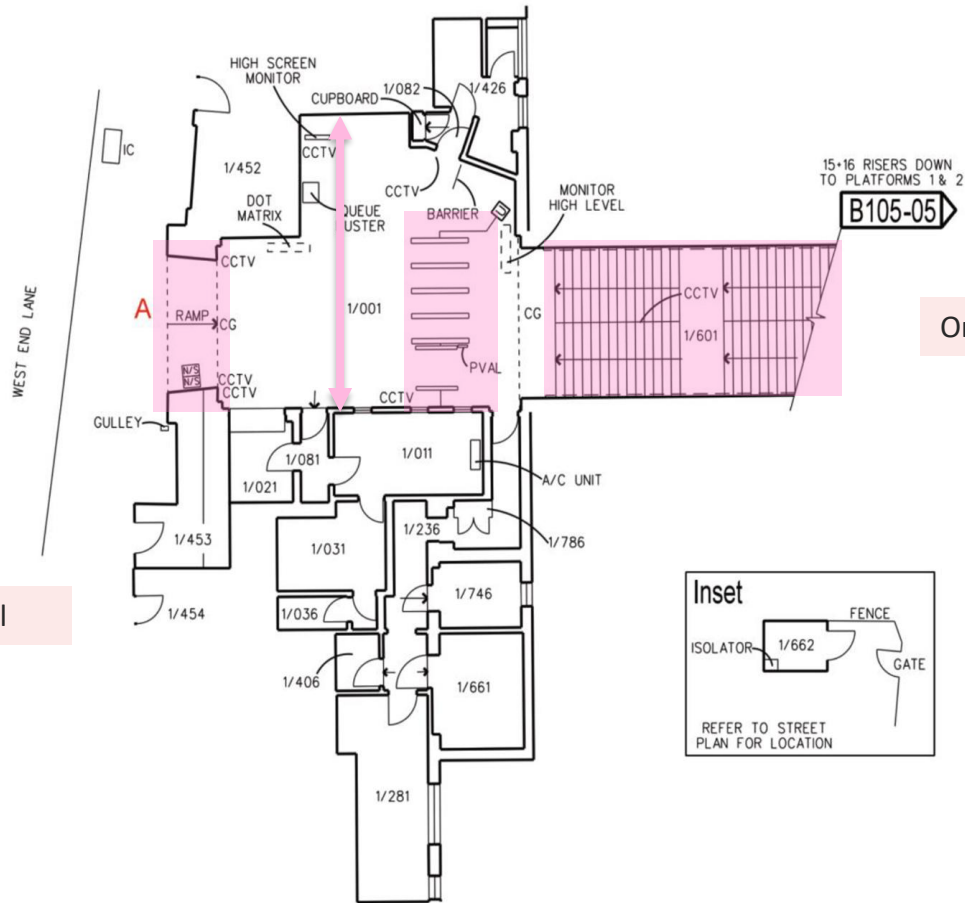
Narrow gate line

Only one entrance

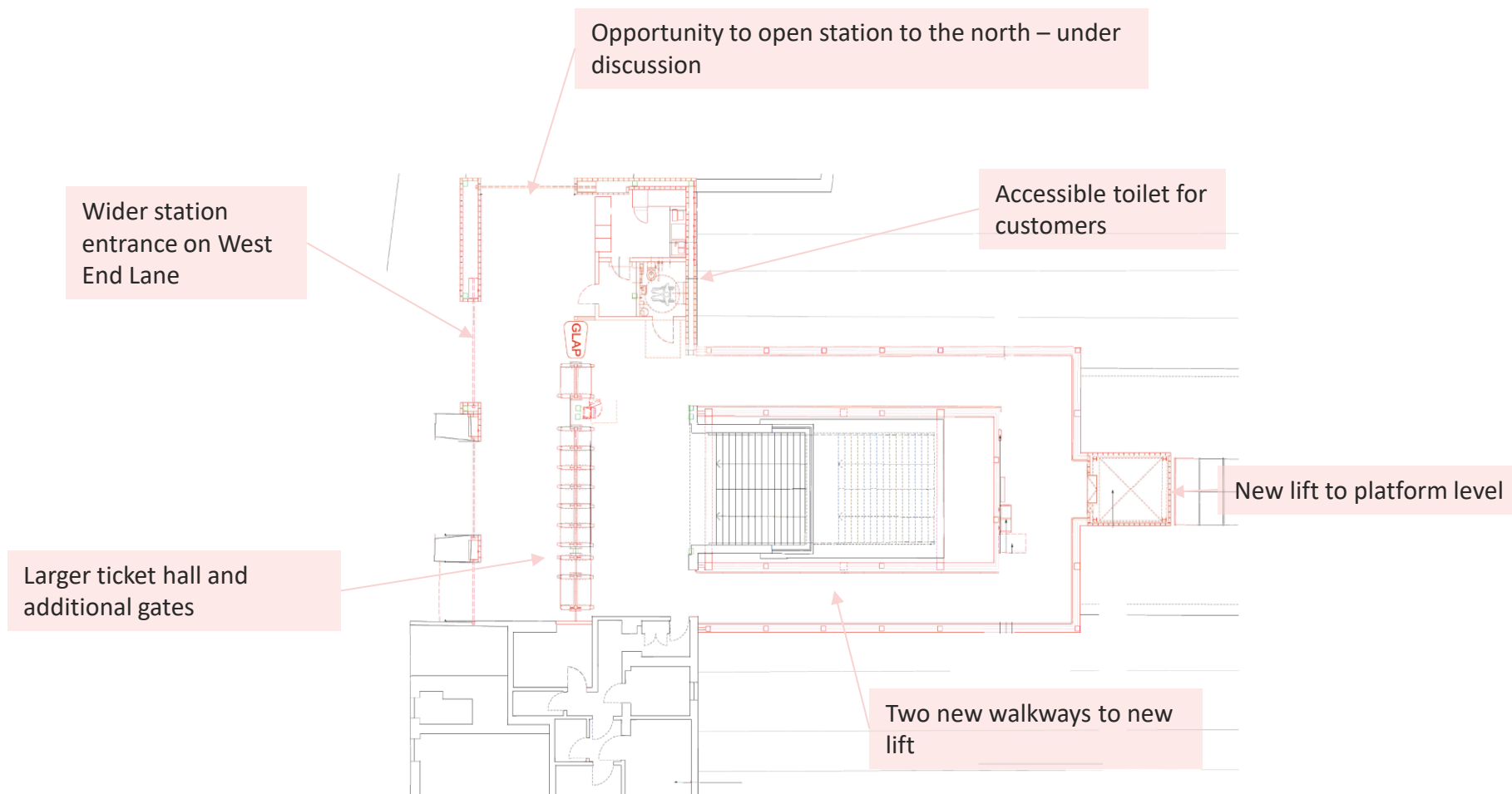
Smaller entrance

Only stairs down to platform

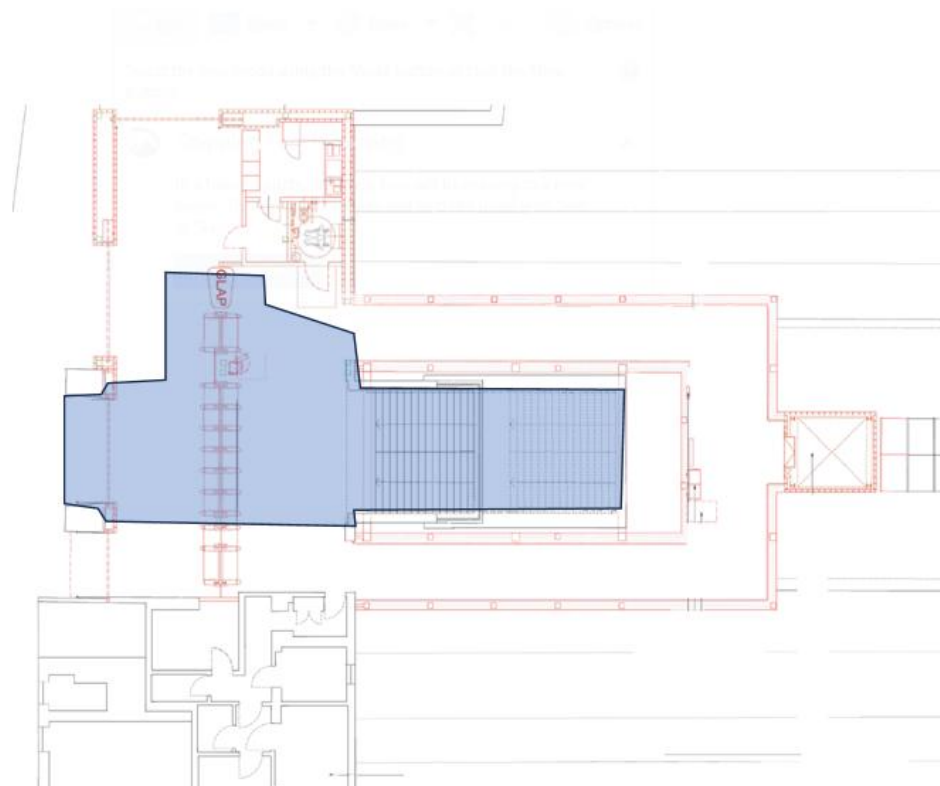
Smaller ticket hall



Option selected at Stage 2



Old -v- New Station Overlay



Option selected at Stage 2

This elevation shows :

- A wider station entrance on West End Lane
- A larger ticket hall with additional gates to reduce congestion

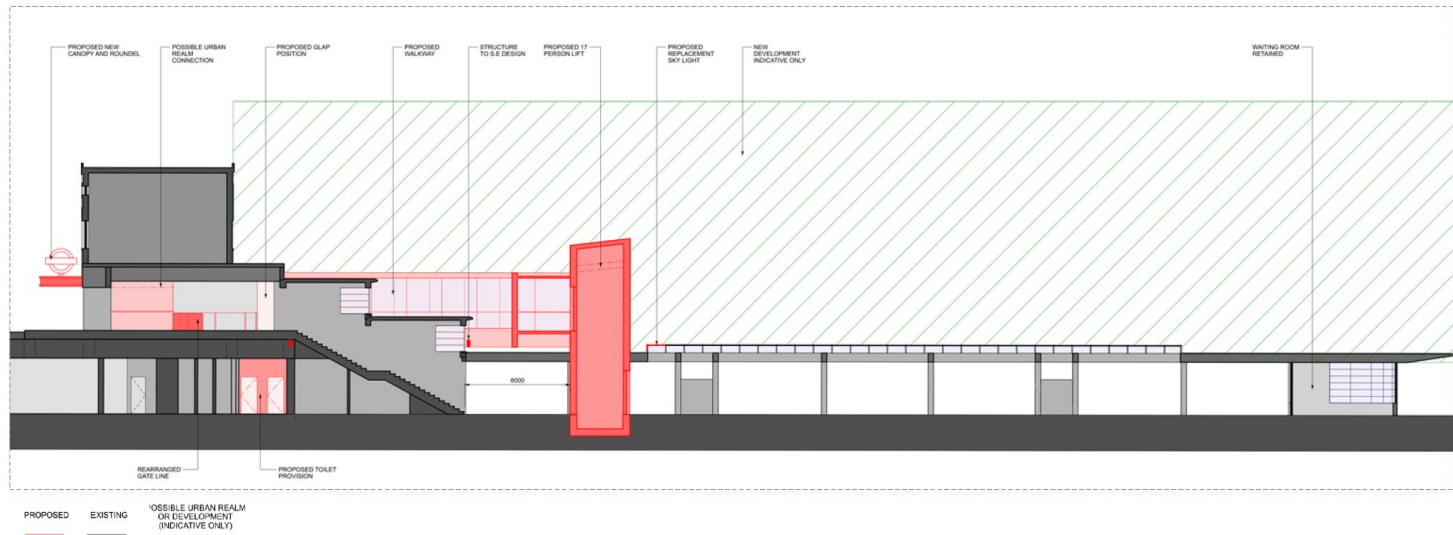


Option selected at Stage 2

This image shows:

- Position of new lift shaft from ticket hall level to platform
- Walkway to lift
- Improved toilet provision at platform level

2.3.4 Option B – Proposed Section



Current view from West End Lane



West Hampstead Station – Concept Design Visual



Local Implementation Plan Funding 25/26

Provides:

- Annual funding allocated to the London's Boroughs to deliver projects aligned to the Mayor's Transport Strategy
- Enable the delivery of the Mayor of London's Transport Strategy and allocated by evaluation of submissions
- Camden Council's allocation for 25/26 - £3.305m
 - Safer Corridors and Neighbourhoods
 - Cycle Network Development
 - Bus Priority
 - Safer Streets
 - Cycle Parking, Cycle training, Cycle Parking
 - Micromobility
 - Camden's delivery of the Holborn Liveable Neighbourhood



HS2 in Camden

A brief update:

- Ongoing discussions with partners around the Euston campus
- Utility diversion related enabling works to come forward



Questions and cases

